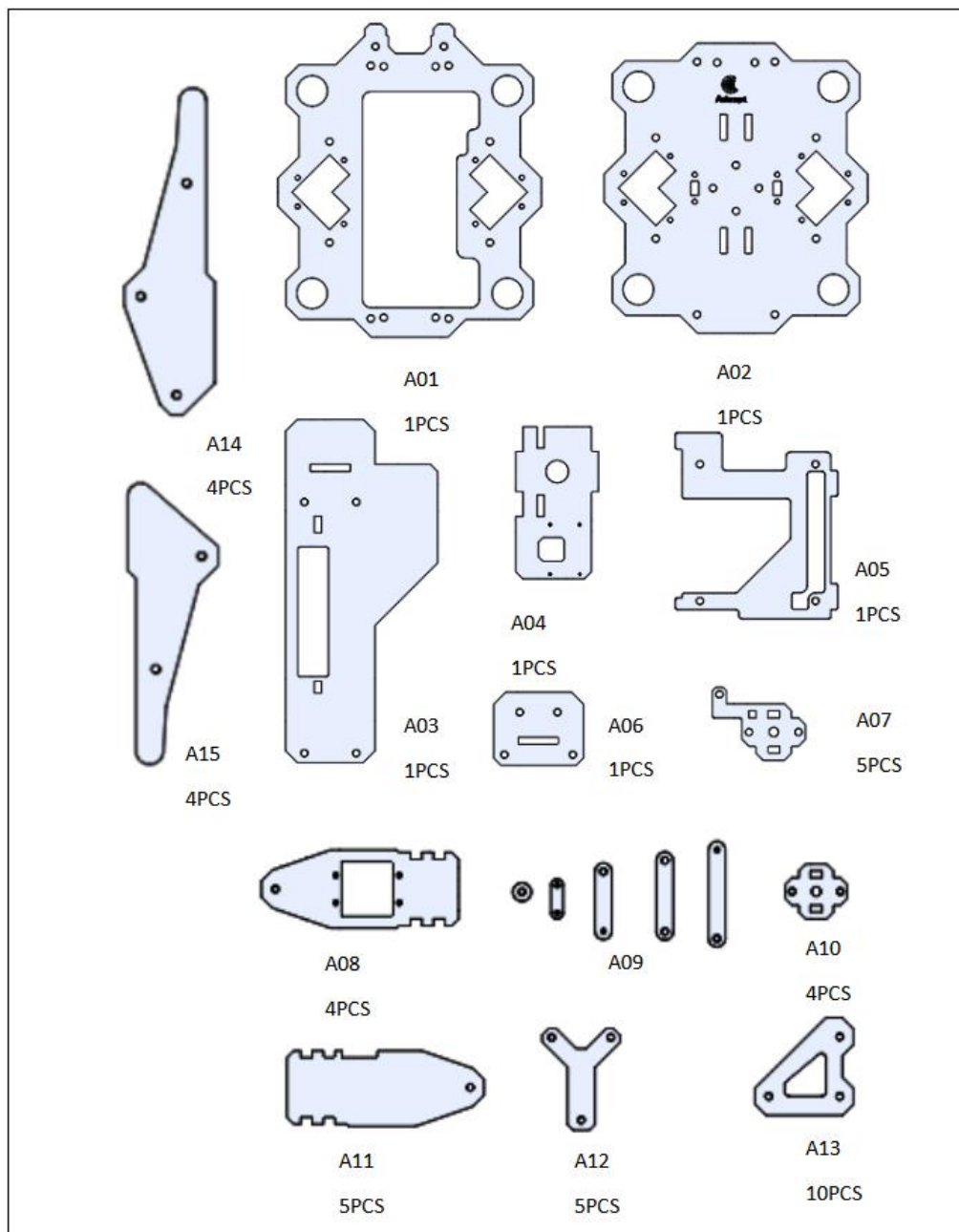


Product List

Acrylic Plates



The acrylic plates are fragile, so please be careful when assembling them in case of breaking. The acrylic plate is covered with a layer of protective film. You need to remove it first. Some holes in the acrylic may have residues, so you need to clean them before the use.

Acrylic board number is needed during assembly.

Machinery Parts

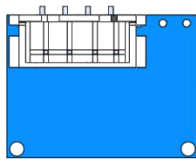
 <p>M2 Nut</p> <p>X28</p> <p>www.adeept.com</p>	 <p>M4 Lock Nut</p> <p>X4</p> <p>www.adeept.com</p>	 <p>M3 Nut</p> <p>X10</p> <p>www.adeept.com</p>	 <p>M3 Lock Nut</p> <p>X28</p> <p>www.adeept.com</p>	 <p>M2*8 Screw</p> <p>X8</p> <p>www.adeept.com</p>
 <p>M2.5*4 Screw</p> <p>X16</p> <p>www.adeept.com</p>	 <p>M2.5 Nut</p> <p>X4</p> <p>www.adeept.com</p>	 <p>M3*8 Screw</p> <p>X32</p> <p>www.adeept.com</p>	 <p>M3*10 Screw</p> <p>X20</p> <p>www.adeept.com</p>	 <p>M3*16 Screw</p> <p>X12</p> <p>www.adeept.com</p>
 <p>M3*25 Screw</p> <p>X4</p> <p>www.adeept.com</p>	 <p>M2*14 Screw</p> <p>X20</p> <p>www.adeept.com</p>	 <p>M3*12 Countersunk Head Screw</p> <p>X2</p> <p>www.adeept.com</p>	 <p>M1.4*6 Self-tapping Screw</p> <p>X4</p> <p>www.adeept.com</p>	 <p>M2.5*4+6 Copper Standoff</p> <p>X4</p> <p>www.adeept.com</p>
 <p>M2.5*6+6 Copper Standoff</p> <p>X4</p> <p>www.adeept.com</p>	 <p>M1.7*6*6 self-tapping screw</p> <p>X12</p> <p>www.adeept.com</p>	 <p>M4*55 screw</p> <p>X4</p> <p>www.adeept.com</p>	 <p>Metal washer</p> <p>X8</p> <p>www.adeept.com</p>	 <p>M3*6 Nylon Standoff</p> <p>X12</p> <p>www.adeept.com</p>
 <p>M3*20 Nylon Standoff</p> <p>X12</p> <p>www.adeept.com</p>	 <p>M3*40 Nylon Standoff</p> <p>X8</p> <p>www.adeept.com</p>	 <p>F624ZZ bearing</p> <p>X8</p> <p>www.adeept.com</p>	 <p>M2*6 Copper Standoff</p> <p>X4</p> <p>www.adeept.com</p>	 <p>M4 Nut</p> <p>X2</p> <p>www.adeept.com</p>
 <p>Rubber washer 4*14*3</p> <p>X8</p> <p>www.adeept.com</p>	 <p>M3*12 Screw</p> <p>X8</p> <p>www.adeept.com</p>			

Electronic Parts

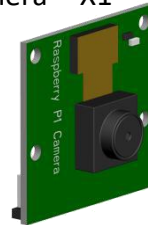
Servo X13



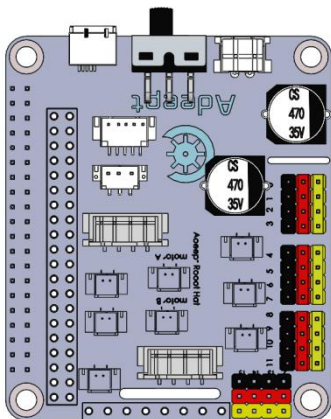
MPU-6050 X1



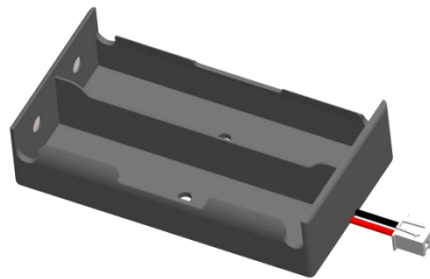
Raspberry Pi Camera X1



ROBOT HAT X1



18650 Battery Holder Set X1



CAR LIGHT X2



3-Pin Wire X2



4 PIN WIRE X1



Tools

Cross Screwdriver X1



Cross Socket Wrench X1



Large Cross-head Screwdriver X1



Winding Pipe X1

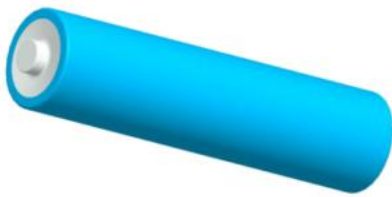


Ribbon X1

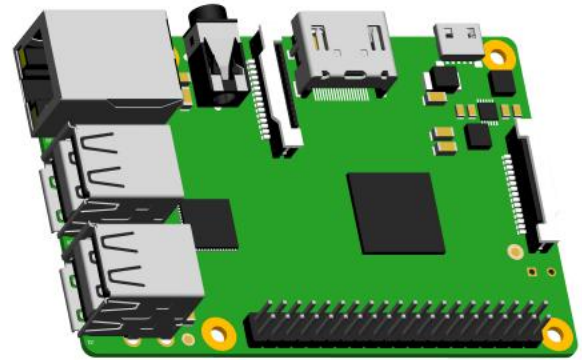


Self-prepared Parts

18650 Battery X2



Raspberry Pi X1



Choose an 18650 battery that supports a maximum output current of at least 4A or choose an 18650 battery with "high rate discharge".